

## Summarize of the events concerning the crash Halifax III dated 13/05/1944.

Question to solve: where did the aircraft crash precisely?

Complementary question: where did the survivor Barzeele land with his parachute?

### 1 Timeline

Time	Events	Source
12/5/1944	Mission targeting the railyards of Leuven with Halifax III MZ629, code letters SE-B with 7 crew members Royal Canadian Air Force 431 Squadron located in Croft England	Document 1
13/5/1944 - 00:38	Leaving target	Document 1
13/5/1944 - 00:43	Burst, then fire	Document 1
13/5/1944 - 00:??	Throw escape hatch away	Document 1
13/5/1944 - 00:??	Three crew jumped: Barzeele + ? + ?, four stayed in the plane. The ? And ? may have been the two gunners Empey and Yarrington. They were identified in the cemetery record. It took years to identify the remainder of the crew.	Document 1 John & Wayne enquiry
13/5/1944 - 00:??	Aircraft fell at <b>Espinette, near Waterloo</b>	Document 1
13/5/1944 - 00:??	One enemy aircraft fell close to the Halifax III	Document 1
13/5/1944 - 00:??	Barzeele fell in trees and survived	Document 1
13/5/1944 - 12:00	Barzeele showed up in Waterloo	

### 2 Information's and assumptions

Information	Source
Presumed flight route: I do not think that they went all the way to Turning Point 3 on the planned red route, as I believe they turned early and followed the blue path, which put them to the north of the desired route.	John & Wayne enquiry
Presumed attacker: Heinz Struning with He 219	John & Wayne enquiry, and Boiten book
Presumed crash zone: vicinity of 15km SSE of Brussels	John & Wayne enquiry
There is another place called Espinette at this period? not far from Halle: <a href="https://maps.nls.uk/geo/explore/#zoom=13&amp;lat=50.72288&amp;lon=4.25511&amp;layer=s=157&amp;b=1">https://maps.nls.uk/geo/explore/#zoom=13&amp;lat=50.72288&amp;lon=4.25511&amp;layer=s=157&amp;b=1</a>	See given Link
There were three aircraft that crashed around Brussels that night: <ul style="list-style-type: none"><li>• LK883 at Londerzeel, northeast of Brussels</li><li>• KB710 somewhere south of Brussels</li><li>• MZ629 somewhere south of Brussels</li></ul> <a href="https://www.luchtvaartgeschiedenis.be/tweede-wereldoorlog-kroniek?YdGk=572&amp;order=field_datum&amp;sort=asc&amp;page=21">https://www.luchtvaartgeschiedenis.be/tweede-wereldoorlog-kroniek?YdGk=572&amp;order=field_datum&amp;sort=asc&amp;page=21</a>	See given Link

The bodies were brought to Brussels Town Cemetery by the Germans and the cemetery register is very confusing. Crew members from different aircraft are listed as coming from the same location, and crew members from the same aircraft are listed as coming from different locations.	
Some more information can be found here about the flight, but John thinks it describes the flight Lancaster KB710 and not the Halifax MZ629 <a href="https://luchtvaartgeschiedenis.be/content/halifax-bij-hallerbos">https://luchtvaartgeschiedenis.be/content/halifax-bij-hallerbos</a>	
According to information's from RCAF personnel records, the Germans specifically located Lancaster KB710 4 km SE of Halle, and Halifax MZ629 15km SSE of Brussels. John thinks that it is where the attack on MZ 629 took place, but not the crash.	

**Document 1: audition of Barzeele (survivor)**

QUESTIONNAIRE FOR RETURNED AIRCREW

### LOSS OF BOMBER AIRCRAFT

NUMBER	RANK	W/O 2	NAME	BARZELLE	C.S
Squadron	431	Aircraft Letter	B	Type of Aircraft	HALIFAX III M2-629
Date of Loss	12.5.44	Target	LOUVAIN		
How many Ops. had you done		Duty in Aircraft	NAV.		
Date of Interrogation		Information extracted from	K. report		

NARRATIVE OF EVENTS FROM TAKE-OFF TO LANDING:-

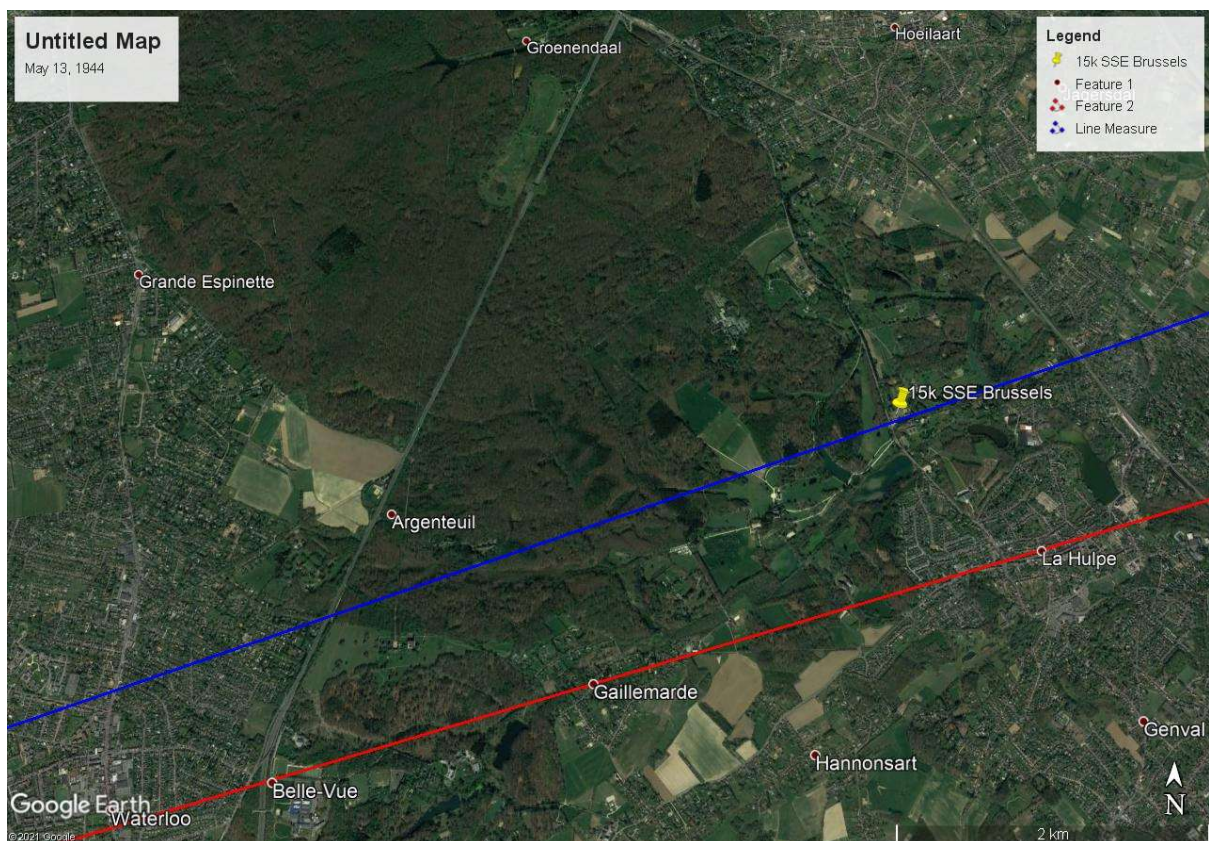
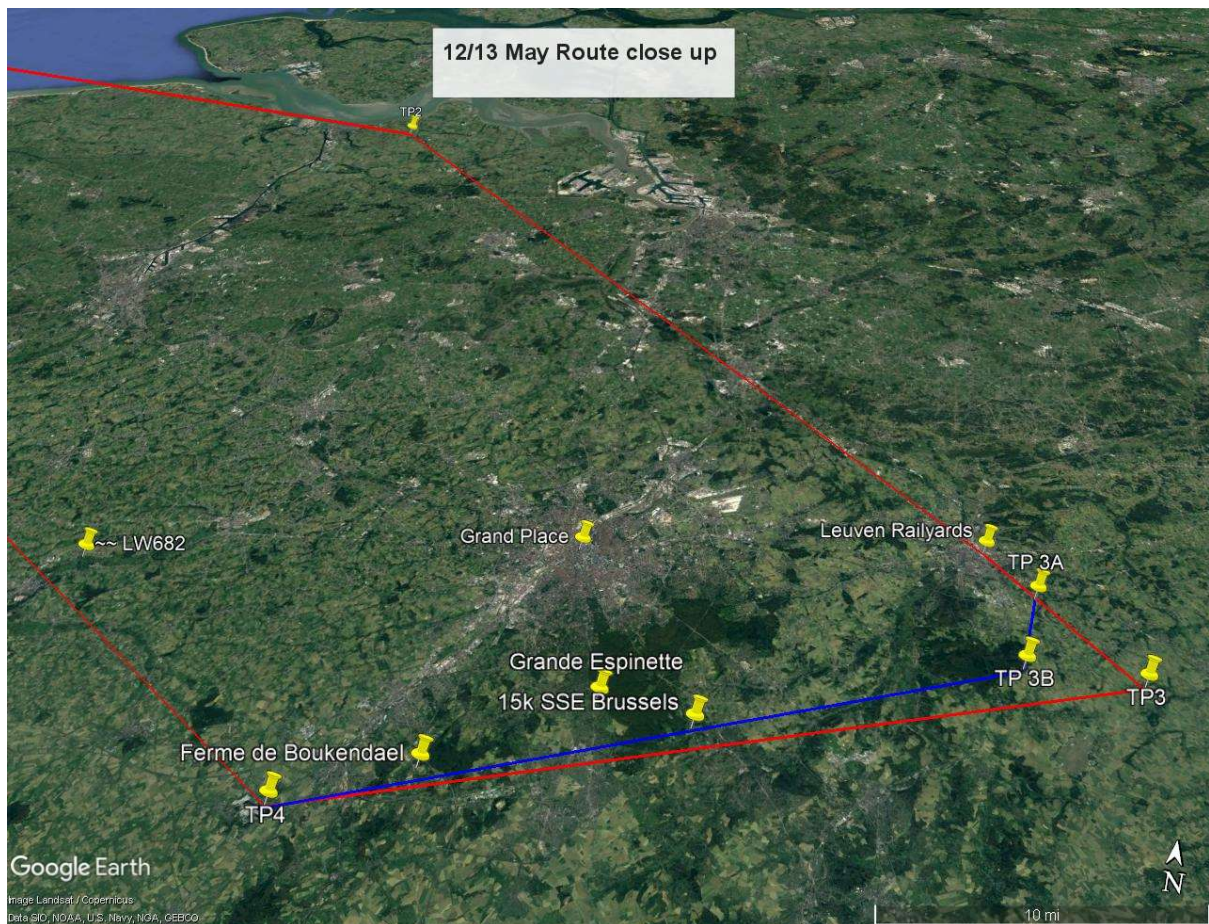
PILOT	W/O CAMPBELL	4	KILLED X
RA.	F/O PRESTON	2	?
W/OP.	W/O IATURUS	2	?
M/U.	SGT. EMFY	3	KILLED
F/ENG.	SGT. MACPHERSON	2	KILLED
R/G.	SGT. YARRINGTON	3	KILLED
NAV.	W/O BARZEWLE	2	EVASIED

Narrative:

Arrived before markers fell and circled and bombed on 2nd run. So were 2 mins. later leaving target approx. 0038 hrs. 5 mins. after leaving target, got short burst. Flying 8,000'. Hit in port wing which immediately caught fire. Nav asked pilot if they should bale out. No reply, so crew put on chutes. W/Op tried to open escape hatch, but could not manage it, but nav. succeeded, and threw it up under A/C. About 1000'. W/Op was just behind Nav. who left 1st, so may have ??? Heard later that 2 chutes were found in trees, but they were burnt. Thought that fighter attacked from below. Heard later that 4 fighters were after them. 3 bombs and 1 enemy fighter fell close to own A/C. Heard that own A/C burnt out and crashed Espinette (nr Waterloo). A/C dived immediately after attack, could not attempt to put out fire. 4 or more bodies reported to have been found in A/C. Chute opened immediately and Nav. landed in tree and fell to ground sustaining slight bruising. No moon. French locals said that the fighter was F.W. 190, but no one in A/C saw it. Flying straight and level at time of attack.



## Document 2: flight route reconstructed.





### Document 3: army air map 1943

Full map available here:

[http://legacy.lib.utexas.edu/maps/ams/northwest\\_europe/txu-pclmaps-oclc-6471894-lille-ghent-2.jpg](http://legacy.lib.utexas.edu/maps/ams/northwest_europe/txu-pclmaps-oclc-6471894-lille-ghent-2.jpg)

